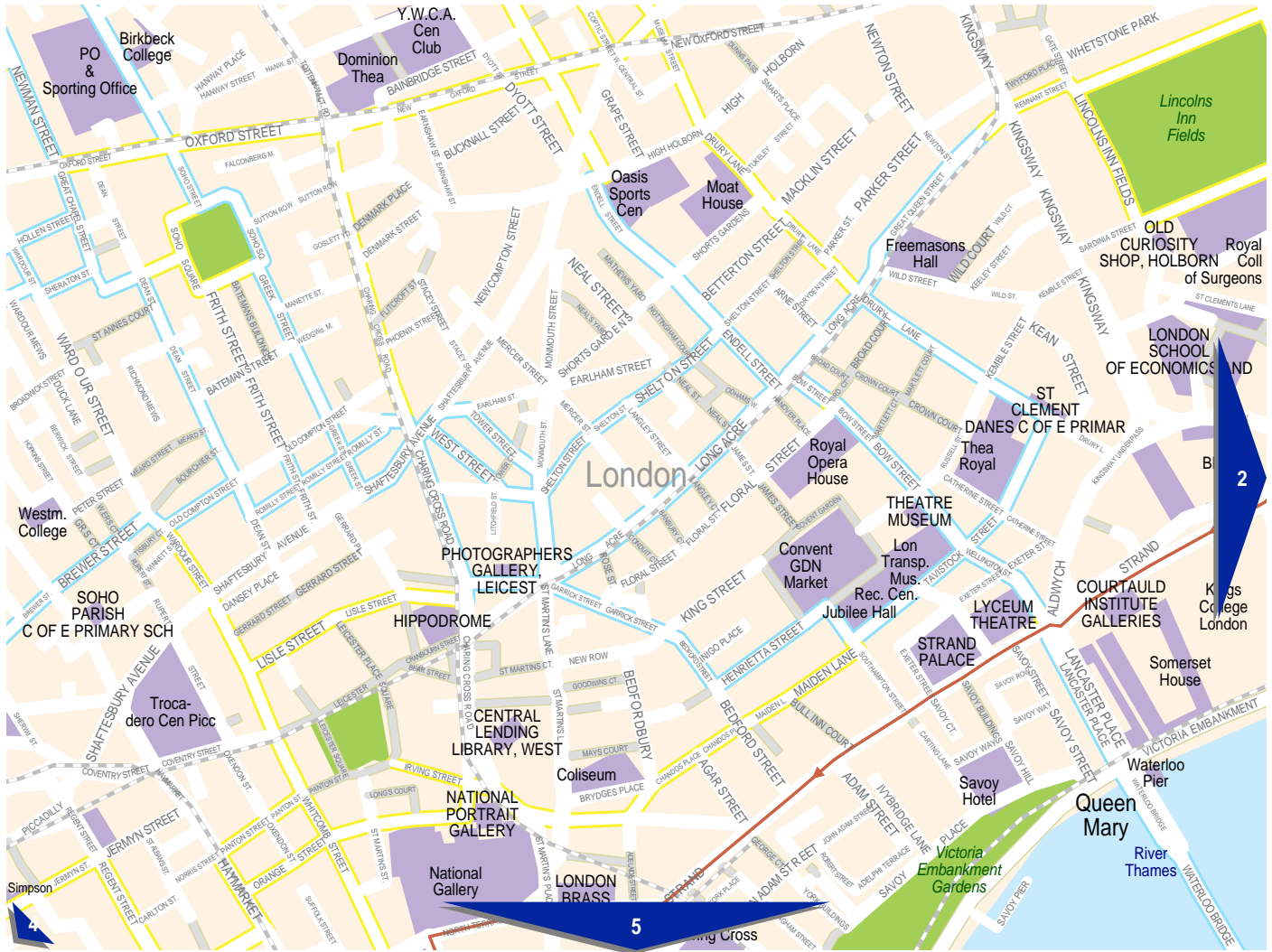


© 2003 NAVTEQ/PTV AG/Map&Guide

- Route signed for cyclists through park or beside canal or river. Usually shared with pedestrians.  Arrival with bike
- Route on quieter roads recommended by cyclists
- Route signed for cyclists separate from traffic. Usually shared with pedestrians.
- Route signed for cyclists. May be on busy roads.  Departure with Bike
- Take Bike



- Route signed for cyclists through park or beside canal or river. Usually shared with pedestrians.
- Route on quieter roads recommended by cyclists
- Route signed for cyclists separate from traffic. Usually shared with pedestrians.
- Route signed for cyclists. May be on busy roads.
- Take Bike

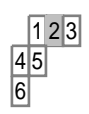
1 2 3  
4 5  
6

21.	↑ Straight Up	Strand	1.1 km 3.3 km
22.	↘ Turn Right Into	Duncannon Street	30 m 3.3 km
23.	↑ Straight Up	Duncannon Street	90 m 3.4 km
24.	↑ Straight Up	North Terrace	140 m 3.5 km
25.	↙ Turn Left Into	Trafalgar Square	100 m 3.6 km

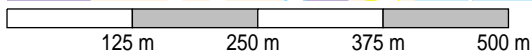
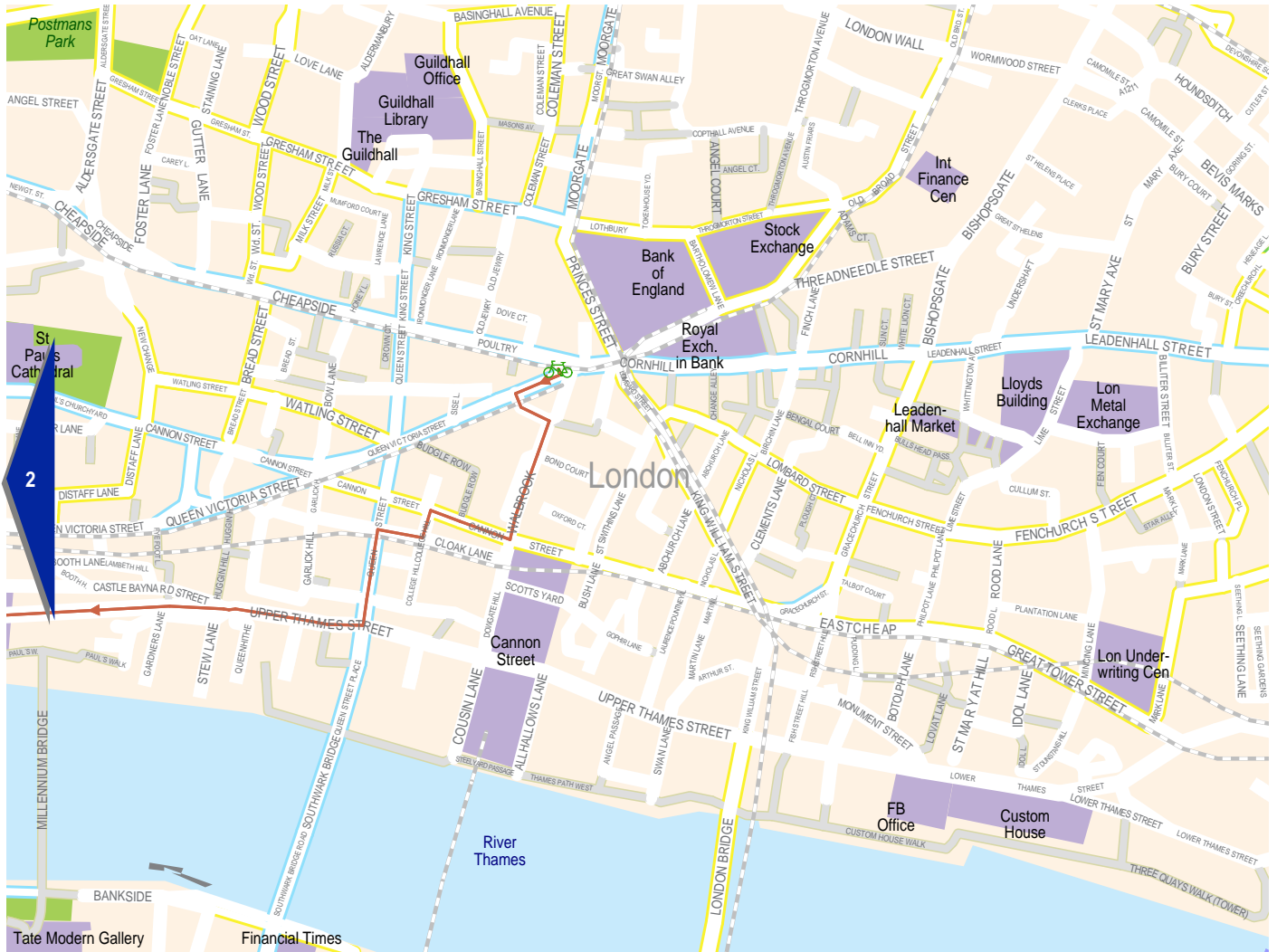


© 2003 NAVTEQ/PTV AG/Map&Guide

- Route signed for cyclists through park or beside canal or river. Usually shared with pedestrians.
- Route on quieter roads recommended by cyclists
- Route signed for cyclists separate from traffic. Usually shared with pedestrians.
- Route signed for cyclists. May be on busy roads.
- Take Bike



10.	Turn Right Into	Upper Thames Street	0.8 km 1.3 km
11.	Straight Up	Blackfriars Underpass	240 m 1.5 km
12.	Straight Up	Victoria Embankment	10 m 1.6 km
13.	Turn Right Into		20 m 1.6 km
14.	Turn Right Into	Temple Avenue	90 m 1.7 km
15.	Turn Left Into	Temple Chambers	50 m 1.7 km
16.	Straight Up		30 m 1.7 km
17.	Turn Right Into	Paper Buildings	90 m 1.8 km
18.	Turn Left Into	Crown Office Row	140 m 2.0 km
19.	Turn Right Into	Middle Temple Lane	160 m 2.1 km
20.	Turn Left Into	Strand	10 m 2.1 km
21.	Straight Up	Strand	1.1 km 3.3 km

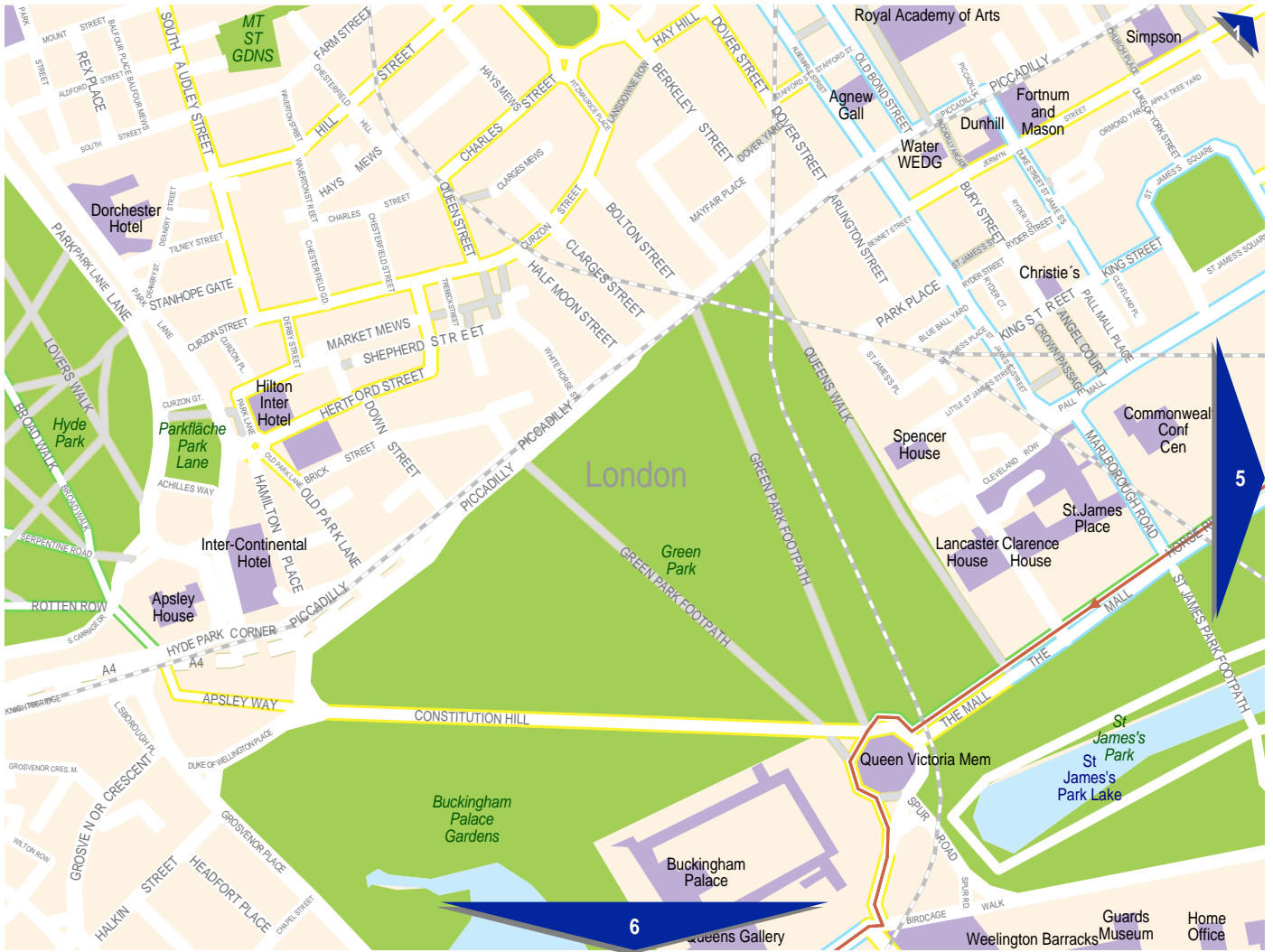


© 2003 NAVTEQ/PTV AG/Map&Guide

- Route signed for cyclists through park or beside canal or river. Usually shared with pedestrians.
  - Route on quieter roads recommended by cyclists
  - Route signed for cyclists separate from traffic. Usually shared with pedestrians.
  - Route signed for cyclists. May be on busy roads.
  - Take Bike
- Departure with Bike



1.		
2.	Queen Victoria Street	50 m
3.	Turn Left Into Bucklersbury	50 m 100 m
4.	Turn Right Into Walbrook	140 m 240 m
5.	Turn Right Into Cannon Street	90 m 330 m
6.	Turn Left Into College Hill	30 m 360 m
7.	Turn Right Into Cloak Lane	50 m 410 m
8.	Turn Left Into Queen Street	80 m 490 m
9.	Straight Up bike connection	30 m 0.5 km
10.	Turn Right Into Upper Thames Street	0.8 km 1.3 km



- Route signed for cyclists through park or beside canal or river. Usually shared with pedestrians.
- Route on quieter roads recommended by cyclists
- Route signed for cyclists separate from traffic. Usually shared with pedestrians.
- Route signed for cyclists. May be on busy roads.
- Take Bike

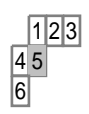
1 2 3  
4 5  
6

29.	↶ Turn Left Into	Horse Ride	1.0 km 4.7 km
30.	↑ Straight Up	Birdcage Walk	240 m 5.0 km
31.	↷ Turn Right Into	Buckingham Gate	20 m 5.0 km
32.	↶ Turn Left Into	Buckingham Gate	200 m 5.2 km

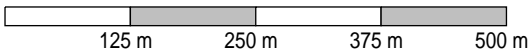


© 2003 NAVTEQ/PTV AG/Map&Guide

- Route signed for cyclists through park or beside canal or river. Usually shared with pedestrians.
- Route on quieter roads recommended by cyclists
- Route signed for cyclists separate from traffic. Usually shared with pedestrians.
- Route signed for cyclists. May be on busy roads.
- Take Bike



21.	↑ Straight Up	Strand	1.1 km 3.3 km
22.	↗ Turn Right Into	Duncannon Street	30 m 3.3 km
23.	↑ Straight Up	Duncannon Street	90 m 3.4 km
24.	↑ Straight Up	North Terrace	140 m 3.5 km
25.	↖ Turn Left Into	Trafalgar Square	100 m 3.6 km
26.	↗ Turn Right Into	Cockspur Street	10 m 3.6 km
27.	↖ Turn Left Into	Spring Gardens	40 m 3.7 km
28.	↗ Turn Right Into	Cockspur Court	60 m 3.7 km
29.	↖ Turn Left Into	Horse Ride	1.0 km 4.7 km



© 2003 NAVTEQ/PTV AG/Map&Guide

- Route signed for cyclists through park or beside canal or river. Usually shared with pedestrians.
- Route on quieter roads recommended by cyclists
- Route signed for cyclists separate from traffic. Usually shared with pedestrians.
- Route signed for cyclists. May be on busy roads.
- Take Bike

Arrival with bike

1	2	3
4	5	
6		

30.	↑ Straight Up		240 m 5.0 km
31.	↘ Turn Right Into	Birdcage Walk	20 m 5.0 km
32.	↙ Turn Left Into	Buckingham Gate	200 m 5.2 km
33.	↑ Straight Up	Buckingham Palace Road	360 m 5.6 km
34.	↙ Turn Left Into	Terminus Place	30 m 5.6 km
35.	↙ Turn Left Into	Terminus Place	20 m 5.6 km
36.			